

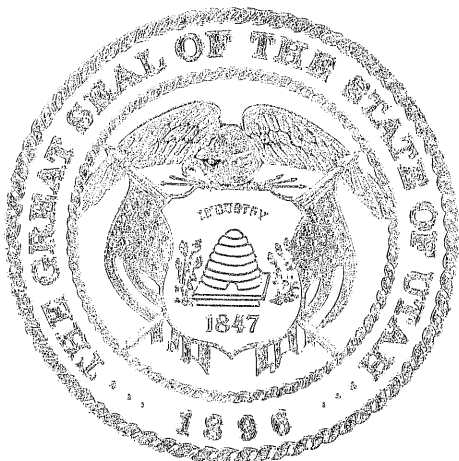
STATE OF UTAH



OFFICE OF THE LIEUTENANT GOVERNOR
CERTIFICATE OF ANNEXATION

I, GREG BELL, LIEUTENANT GOVERNOR OF THE STATE OF UTAH,
HEREBY CERTIFY THAT there has been filed in my office a notice of annexation from
LEHI CITY, dated July 8th, 2008, complying with Section 10-2-425, Utah Code
Annotated, 1953, as amended.

NOW, THEREFORE, notice is hereby given to all whom it may concern that the
attached is a true and correct copy of the notice of annexation, referred to above, on file
with the Office of the Lieutenant Governor pertaining to LEHI CITY, located in Utah
County, State of Utah.



IN TESTIMONY WHEREOF, I have
hereunto set my hand, and affixed the Great
Seal of the State of Utah this 24th day of
February, 2011 at Salt Lake City, Utah.

A handwritten signature in black ink that reads "Greg Bell".

GREG BELL
Lieutenant Governor

LEHI

Stan Lewis Annexation

Lehi City
153 N. 100 E. ← (M)
Lehi, UT 84043

ENT 82323;2008 Pg 1 of 3
RANDALL A. COVINGTON
UTAH COUNTY RECORDER
2008 Jul 22 10:19 am FEE 0.00 BY JL
RECORDED FOR LEHI CITY

ORDINANCE NO. 07-08-08. 30

**ORDINANCE AMENDING THE LAND USE ELEMENT OF
THE LEHI CITY GENERAL PLAN AND THE GENERAL PLAN
LAND USE MAP FOR LARRY HADFIELD & STAN LEWIS**

WHEREAS, on September 25, 2001, following all necessary public hearings, the Lehi City Council adopted a comprehensive amendment to the Lehi City General Plan which included the 2001 Land Use Element together with the Lehi City General Plan Land Use Map; and

WHEREAS, the Lehi City Planning Commission held a public hearing on June 12, 2008, to review and make a recommendation on the General Plan Amendment located between 1100 West and 1500 West and between 900 South and 1200 South from VLDR to Commercial as shown on Exhibit "A" and forwarded their recommendation to the City Council; and

WHEREAS, the City Council held a public hearing on July 8, 2008, pursuant to the requirements for amendment of the Land Use Element of the Lehi City General Plan and General Plan Land Use Map and desires to amend the plan from VLDR to Commercial.

NOW, THEREFORE, IT IS ORDAINED BY THE CITY COUNCIL OF LEHI CITY, UTAH AS FOLLOWS:

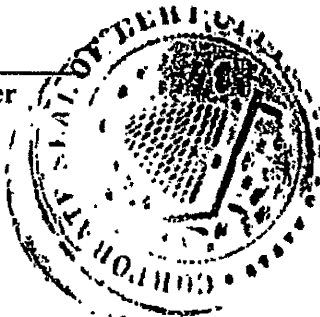
SECTION I: The Land Use Element of the Lehi City General Plan and General Plan Land Use Map is hereby amended to change the land use designation from VLDR to Commercial on property located between 1100 West and 1500 West and between 900 South and 1200 South and more specifically shown on Exhibit "A" attached hereto.

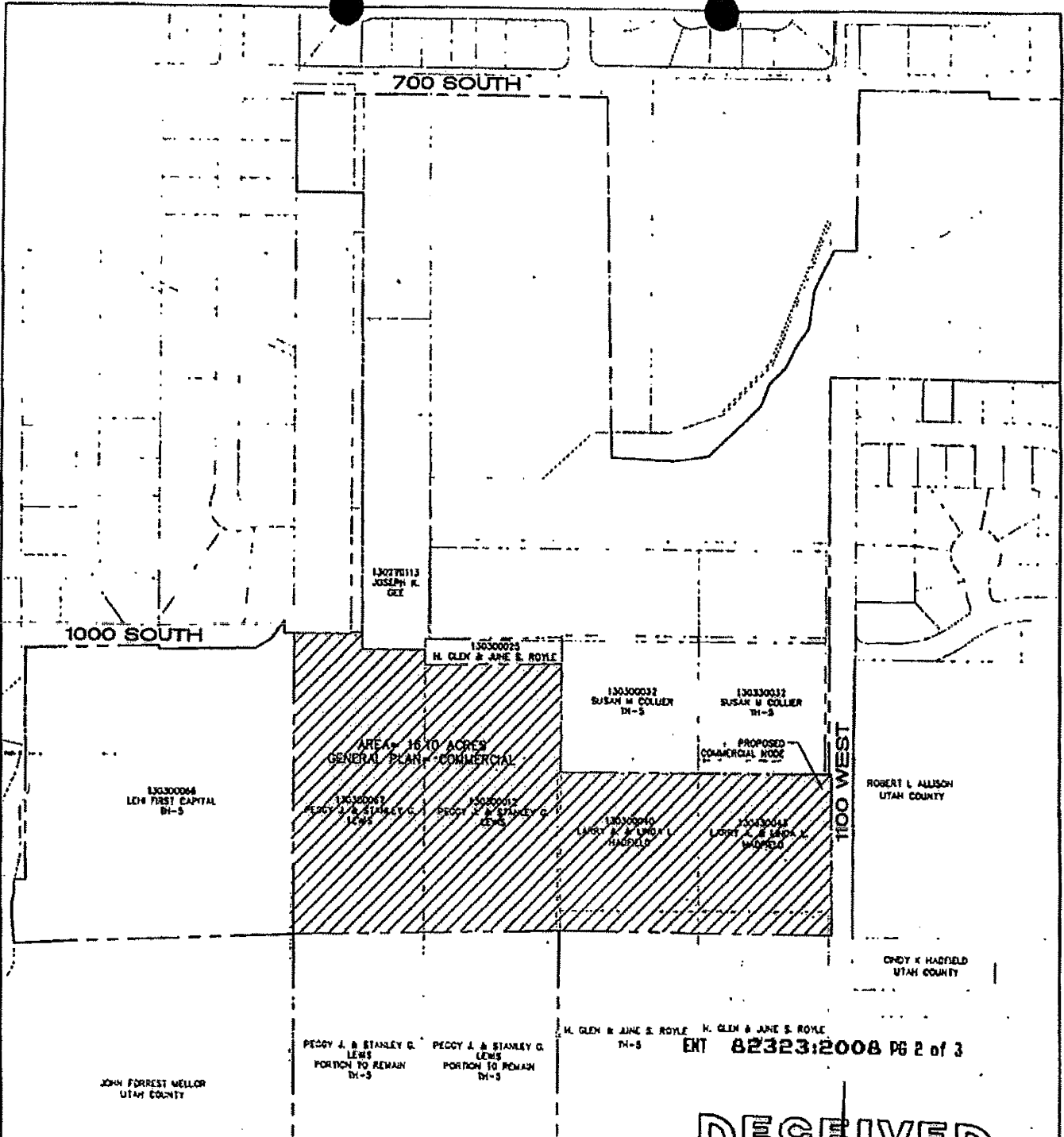
SECTION II: This ordinance shall take effect immediately upon its passage by the City Council and publication, as required by law.

PASSED AND ADOPTED by the Lehi City Council this 8th day of July, 2008.

Howard H. Johnson
HOWARD H. JOHNSON, Mayor

ATTEST:
Connie Ashton
CONNIE ASHTON, City Recorder





ENT 82323:2008 PG 2 of 3

GENERAL PLAN AMENDMENT DESCRIPTION
 COMMENCING AT A POINT WHICH IS SOUTH 89°44'04" WEST 995.24 FEET ALONG THE SECTION LINE FROM THE SOUTHWEST CORNER OF SECTION 17, TOWNSHIP 5 SOUTH, RANGE 1 EAST, SALT LAKE BASE AND MERIDIAN. THENCE SOUTH 296.49 FEET; THENCE SOUTH 39°59'58" EAST 165.00 FEET; THENCE NORTH 00°00'38" EAST 4.13 FEET; THENCE SOUTH 89°59'58" EAST 182.77 FEET; THENCE SOUTH 00°00'11" EAST 76.54 FEET; THENCE NORTH 89°03'58" EAST 337.45 FEET; THENCE SOUTH 00°27'58" WEST 259.00 FEET; THENCE SOUTH 89°59'49" WEST 669.96 FEET; THENCE SOUTH 00°00'11" EAST; THENCE NORTH 89°29'16" WEST 673.11 FEET; THENCE SOUTH 88°44'32" WEST 655.15 FEET; THENCE NORTH 00°00'11" WEST 721.75 FEET TO THE POINT OF BEGINNING.
 PARCEL CONTAINS 16.10 ACRES

RECEIVED
 MAY 19 2008
 LEHOCITY

GENERAL PLAN AMENDMENT	LEWIS/HADFIELD PROPERTY	1100 WEST & 1000 SOUTH
------------------------	----------------------------	------------------------

SURVEYOR'S CERTIFICATE

I HEREBY CERTIFY THAT THIS IS A TRUE AND ACCURATE MAP OF THE TRACT OF LAND TO BE ANNEXED TO LEHI CITY, UTAH COUNTY, UTAH

ANNEXATION DESCRIPTION

COMMENCING AT A POINT WHICH IS SOUTH 89°44'04" WEST 217.19 FEET ALONG THE SECTION LINE AND NORTH 128.88 FEET FROM THE SOUTHWEST CORNER OF SECTION 17, TOWNSHIP 5 SOUTH, RANGE 1 EAST, SALT LAKE BASE AND MERIDIAN. THENCE ALONG THE YOUNG II ANNEXATION PLAT THE FOLLOWING ELEVEN COURSES SOUTH 87°34'47" EAST 155.93 FEET; THENCE NORTH 81°20'06" EAST 84.38 FEET; THENCE NORTH 47°22'36" EAST 176.48 FEET; THENCE NORTH 20°42'36" EAST 56.68 FEET; THENCE NORTH 45°22'24" EAST 59.51 FEET; THENCE NORTH 26°40'14" EAST 54.11 FEET; THENCE NORTH 35°00'36" EAST 54.69 FEET; THENCE NORTH 08°29'59" EAST 93.21 FEET; THENCE NORTH 27°49'20" EAST 104.79 FEET; THENCE SOUTH 89°50'05" EAST 54.21 FEET; THENCE NORTH 00°46'24" EAST 385.12 FEET; THENCE SOUTH 89°55'03" EAST 318.48 FEET ALONG THE SOUTH LINE OF SARGENT CORNER SUBDIVISION PLAT "A"; THENCE ALONG THE MADSEN ANNEXATION THE FOLLOWING THREE COURSES SOUTH 00°01'34" EAST 15.08 FEET; THENCE SOUTH 89°49'39" EAST 272.11 FEET; THENCE NORTH 00°00'26" EAST 33.79 FEET; THENCE NORTH 89°59'52" EAST 83.89 FEET; THENCE SOUTH 00°19'51" WEST 710.53 FEET; THENCE ALONG THE BOYD PETERSON ANNEXATION THE FOLLOWING FIVE COURSES SOUTH 86°31'15" WEST 24.15 FEET; THENCE NORTH 89°22'01" WEST 141.62 FEET; THENCE NORTH 89°29'38" WEST 206.24 FEET; THENCE NORTH 89°25'40" WEST 367.01 FEET; THENCE SOUTH 00°00'08" EAST 675.70 FEET; THENCE SOUTH 00°00'11" EAST 275.06 FEET ALONG A WARRANTY DEED ENTRY# 1453:2008; THENCE NORTH 89°59'49" EAST 6.51 FEET; THENCE SOUTH 00°00'11" EAST 387.41 FEET ALONG A WARRANTY DEED ENTRY# 44462:1999 AND ITS EXTENSION THEREOF; THENCE NORTH 89°29'48" WEST 673.11 FEET IN A STRAIGHT LINE ALONG A MEANDERING FENCE LINE; THENCE SOUTH 00°27'58" WEST 650.34 FEET ALONG A SPECIAL WARRANTY DEED ENTRY# 605:1986; THENCE SOUTH 89°52'58" WEST 649.84 FEET ALONG SAID SPECIAL WARRANTY DEED AND ITS EXTENSION THEREOF; THENCE NORTH 00°00'11" WEST 637.26 FEET ALONG SAID SPECIAL WARRANTY DEED; THENCE ALONG A BOUNDARY LINE AGREEMENT THE FOLLOWING SIX COURSES SOUTH 87°55'12" WEST 685.38 FEET; THENCE NORTH 04°45'16" WEST 52.84 FEET; THENCE NORTH 01°29'03" WEST 43.51 FEET; THENCE NORTH 11°32'55" EAST 20.44 FEET; THENCE NORTH 00°11'05" EAST 27.46 FEET; THENCE NORTH 12°52'08" EAST 9.42 FEET; THENCE ALONG THE PETERSON-KOPINSKY ANNEXATION THE FOLLOWING 3 COURSES SOUTH 89°18'24" EAST 26.90 FEET ; THENCE NORTH 00°04'14" WEST 554.32 FEET ; THENCE NORTH 16°50'06" WEST 0.94 FEET; THENCE NORTH 88°36'36" EAST 327.02 FEET ALONG THE UTAH POWER AND LIGHT ANNEXATION; THENCE ALONG THE LEHI EQUESTRIAN ESTATES ANNEXATION THE FOLLOWING FOUR COURSES SOUTH 00°01'24" EAST 8.02 FEET; THENCE NORTH 89°21'31" EAST 236.19 FEET; THENCE NORTH 58°59'23" EAST 44.02 FEET; THENCE NORTH 36°49'36" EAST 54.36 FEET; THENCE ALONG THE MAUPIN ANNEXATION THE FOLLOWING FIVE COURSES SOUTH 00°00'02" WEST 29.84 FEET; THENCE SOUTH 89°59'58" EAST 165.00 FEET; THENCE NORTH 00°00'36" EAST 4.13 FEET; THENCE SOUTH 89°59'58" EAST 27.87 FEET; THENCE NORTH 00°15'57" WEST 1051.88 FEET; THENCE NORTH 89°59'58" WEST 165.04 FEET; THENCE NORTH 00°02'27" WEST 236.38 FEET ALONG THE LEHI EQUESTRIAN ESTATES ANNEXATION; THENCE SOUTH 89°53'27" EAST 767.70 FEET ALONG THE FRANDSEN-POWERS ANNEXATION; THENCE SOUTH 01°01'10" EAST 862.07 FEET ALONG THE YOUNG II ANNEXATION TO THE POINT OF BEGINNING.
PARCEL CONTAINS 78.76 ACRES MORE OR LESS

BASIS OF BEARING: NAD 83 BEARINGS AS SHOWN ON PLAT

